

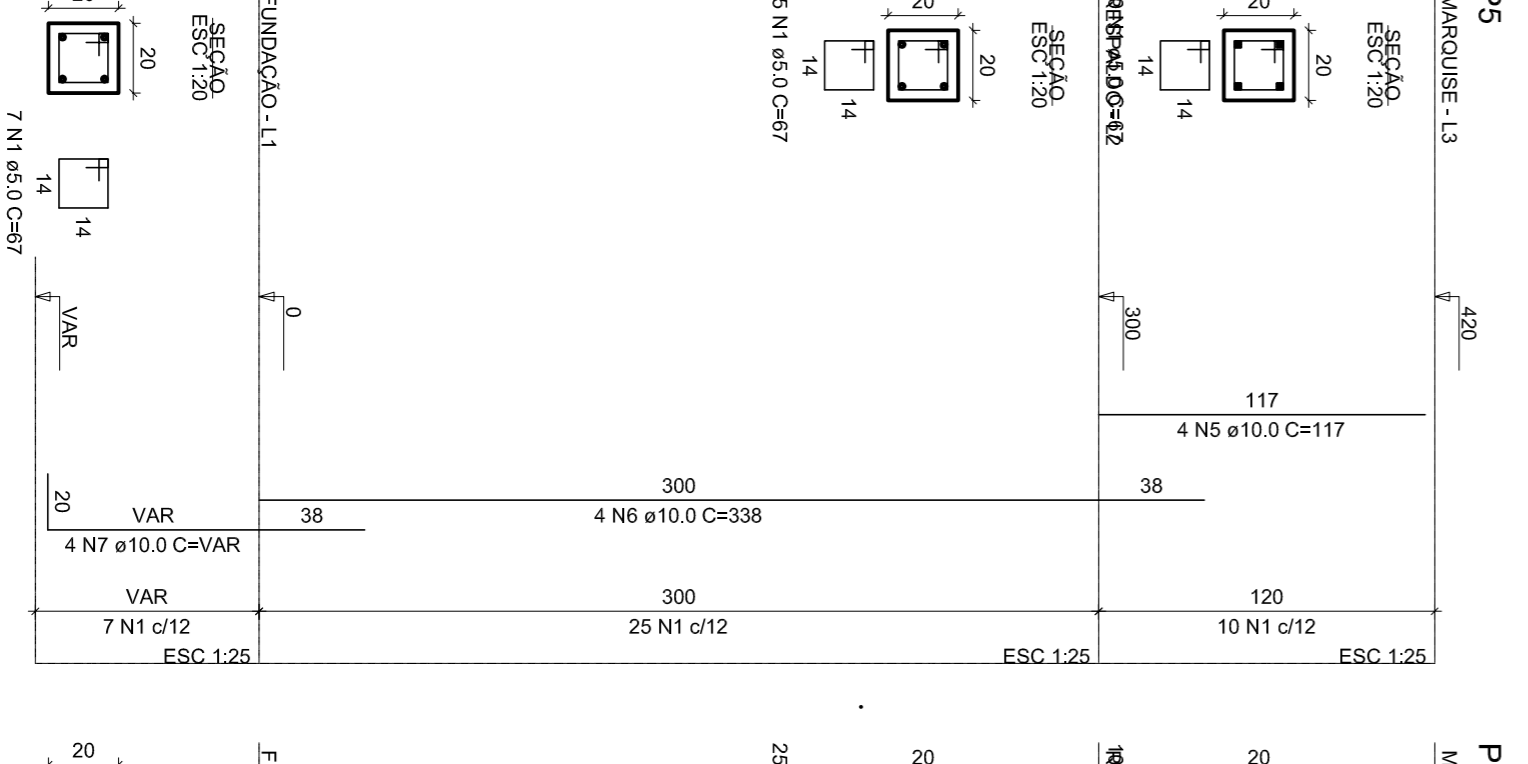
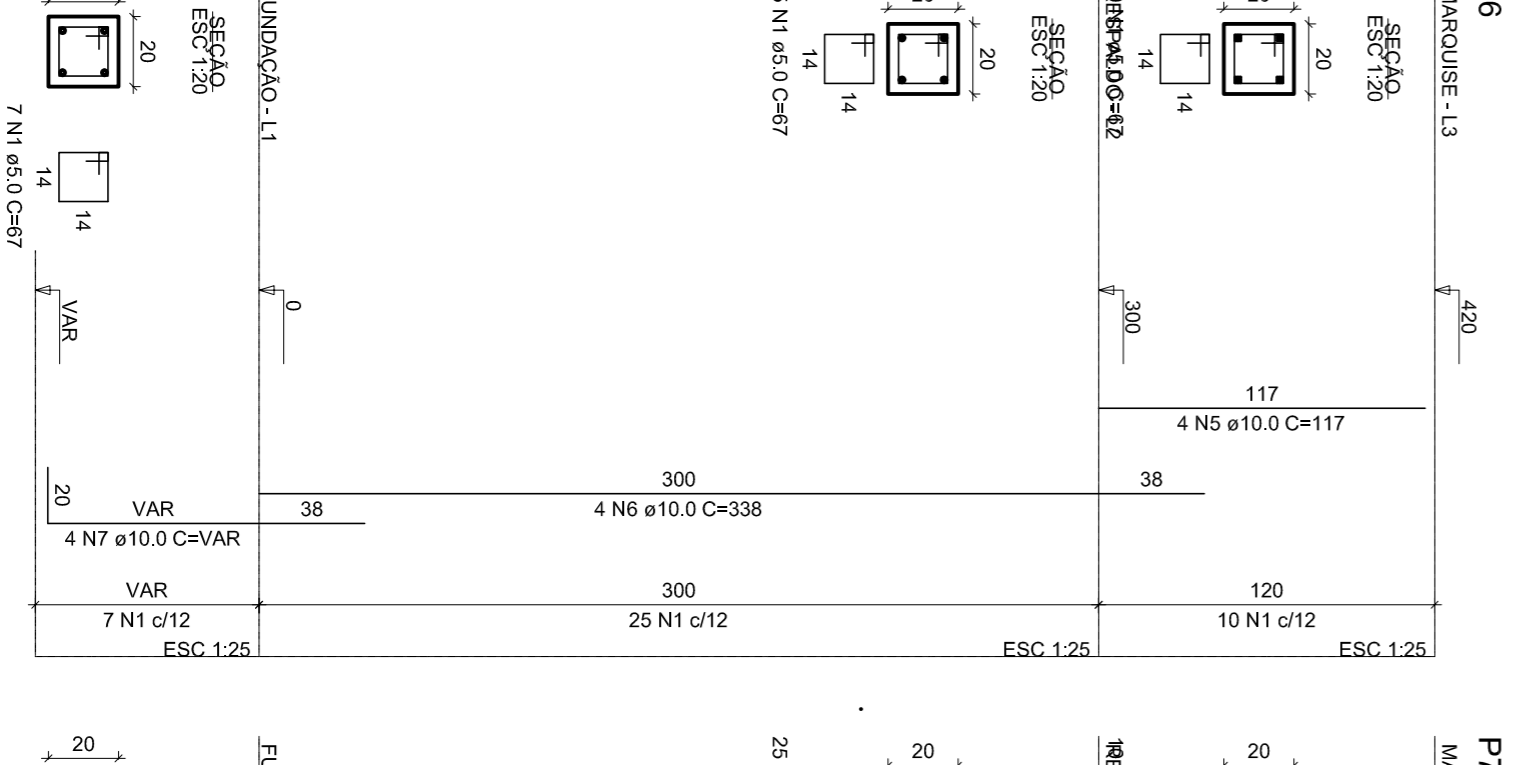
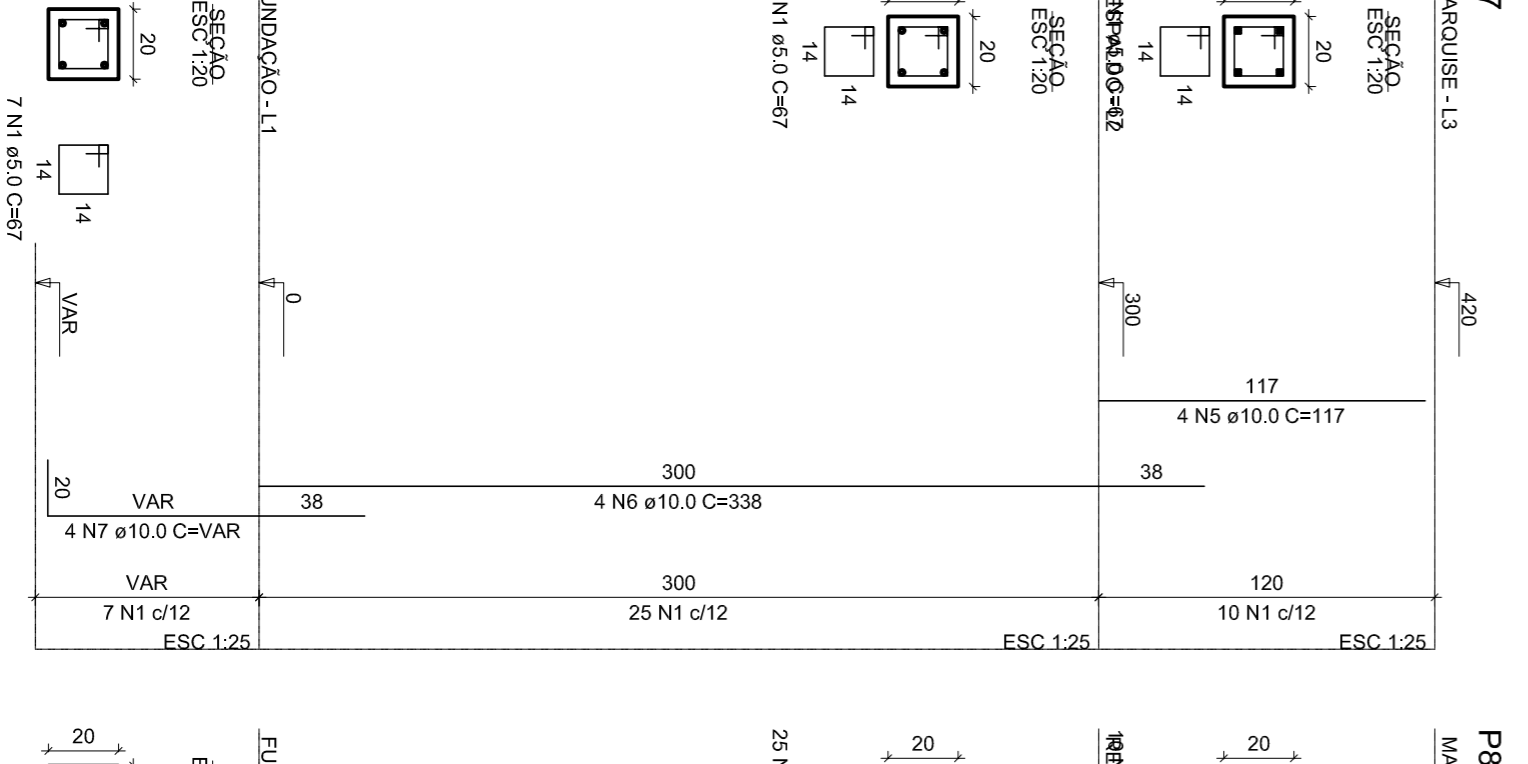
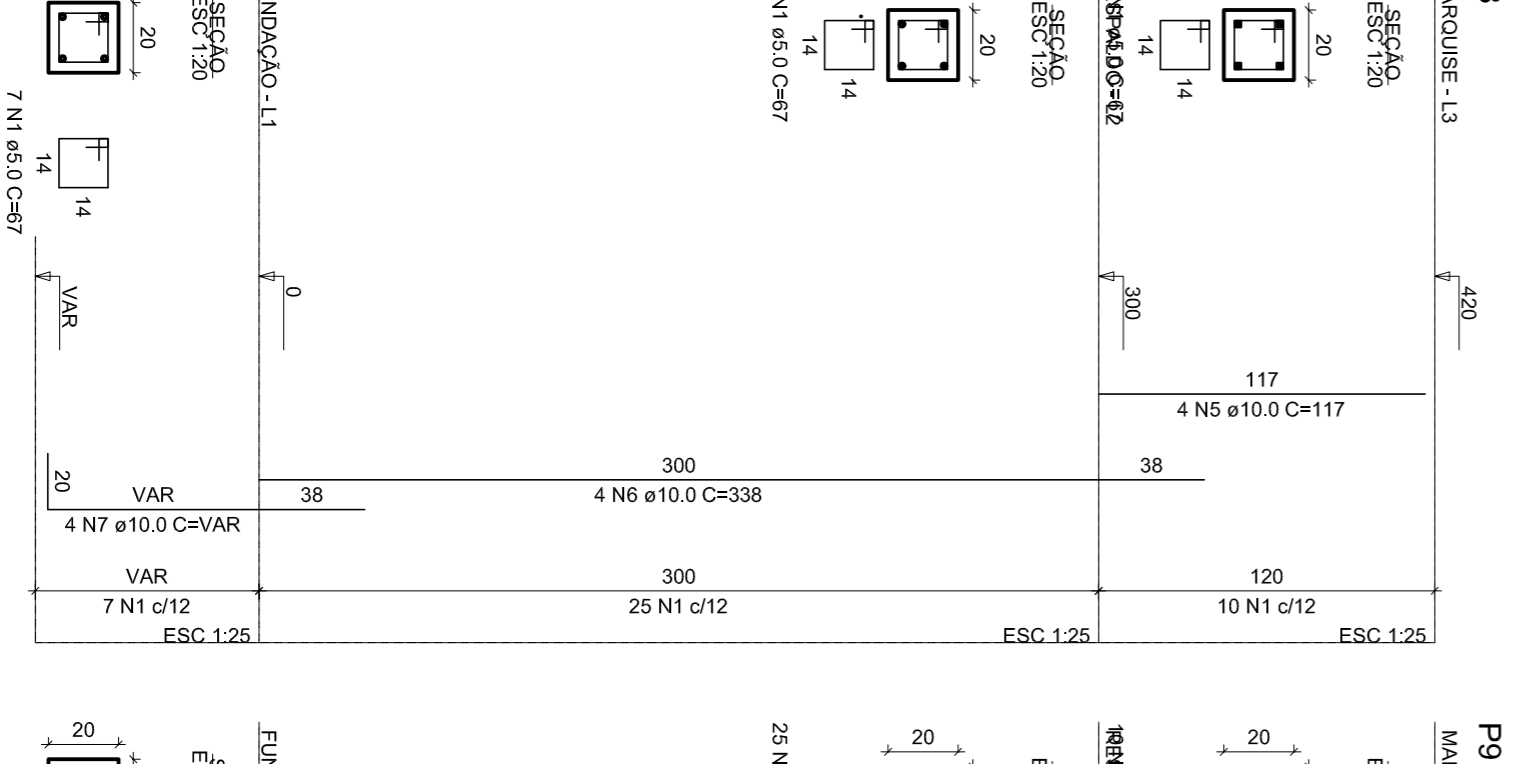
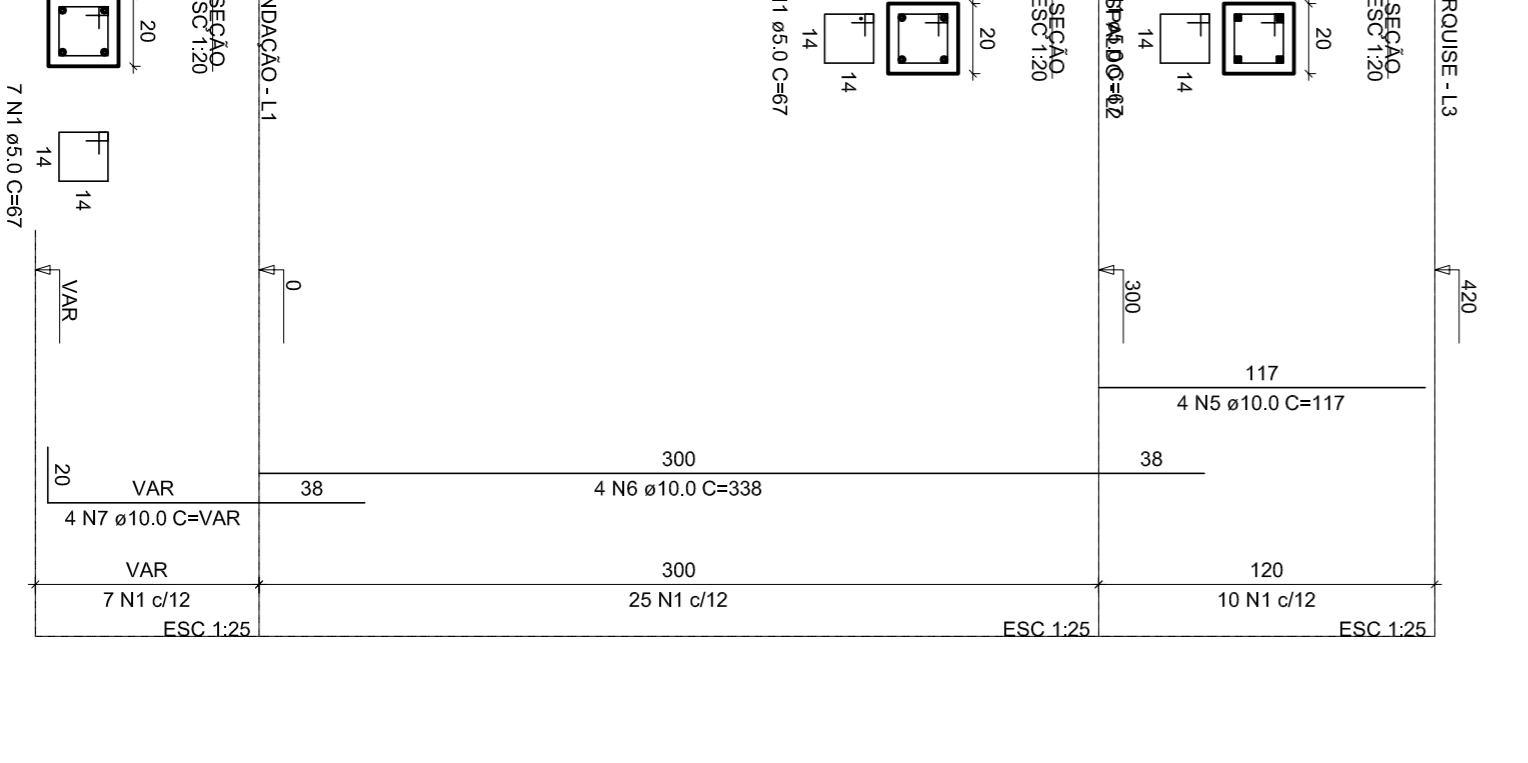
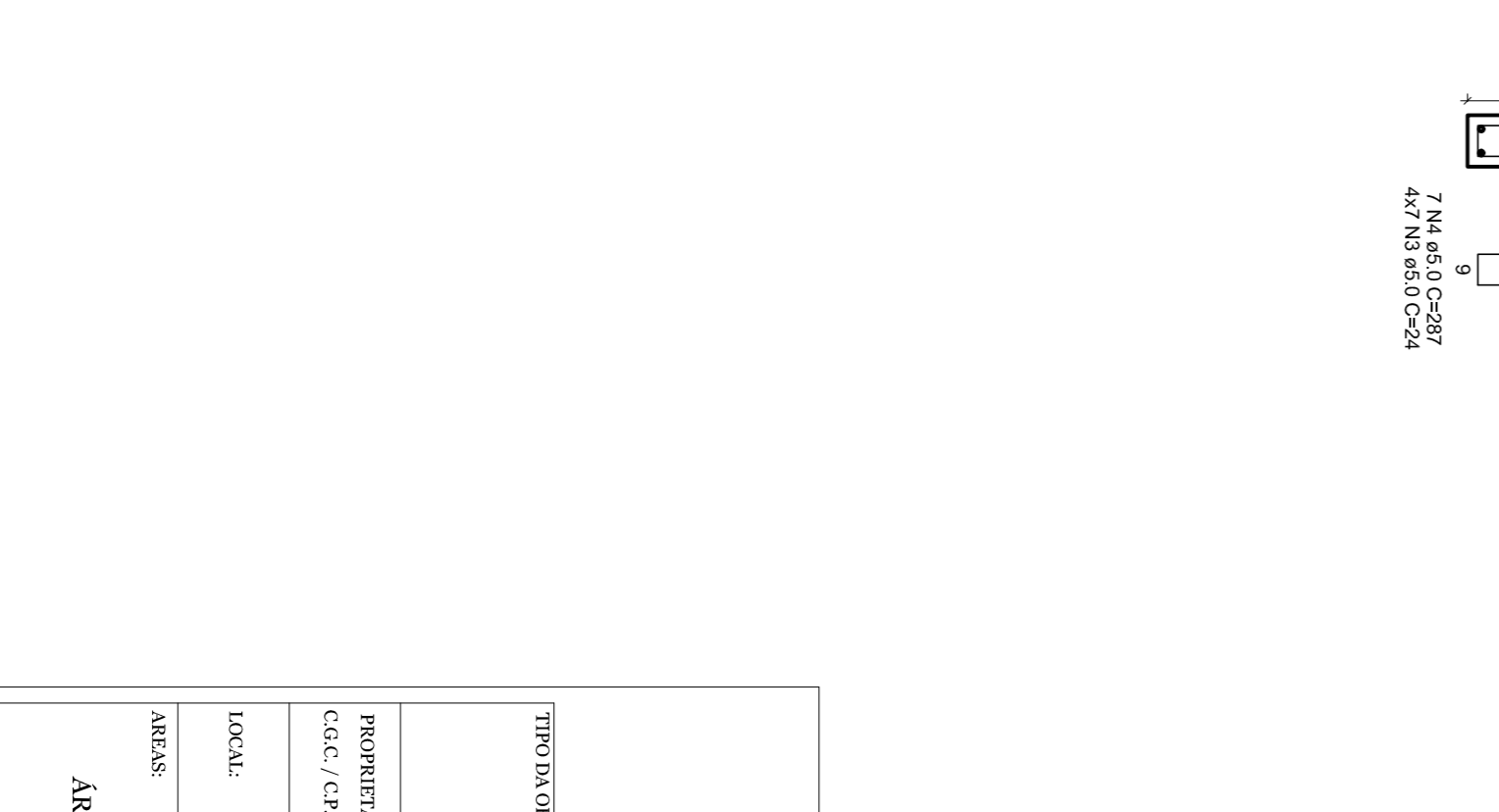
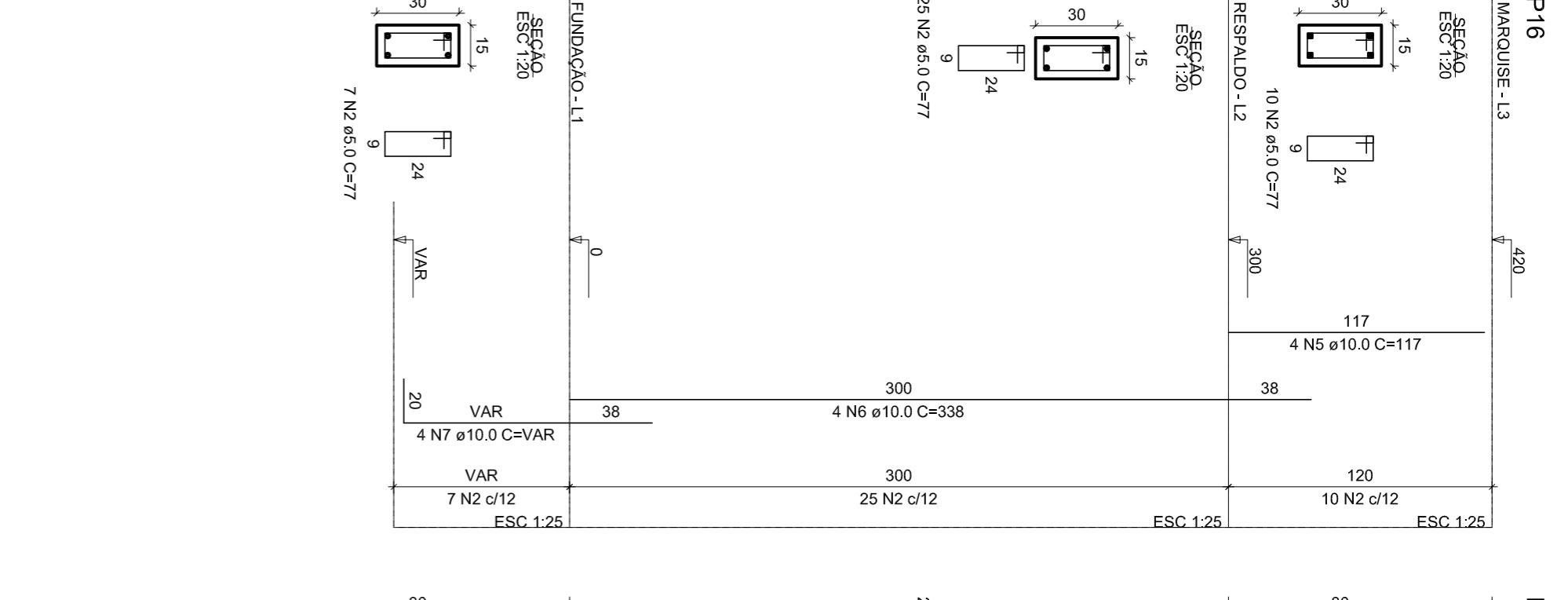
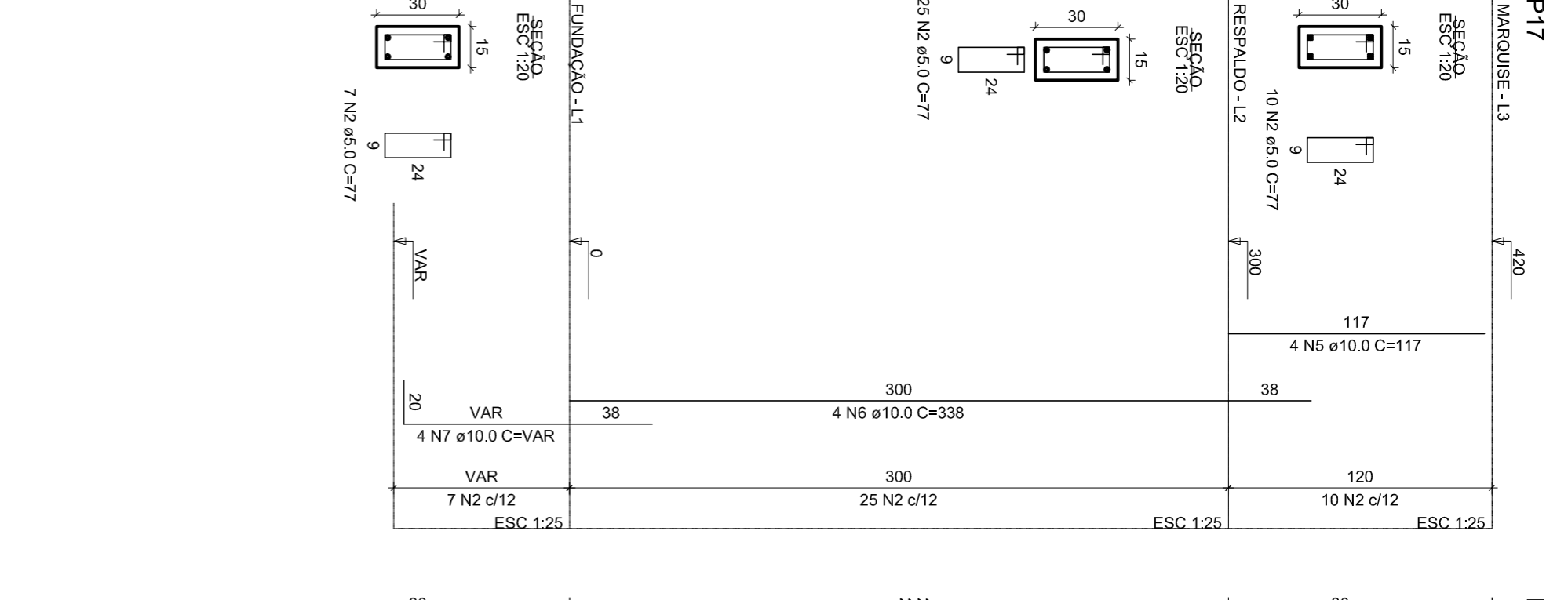
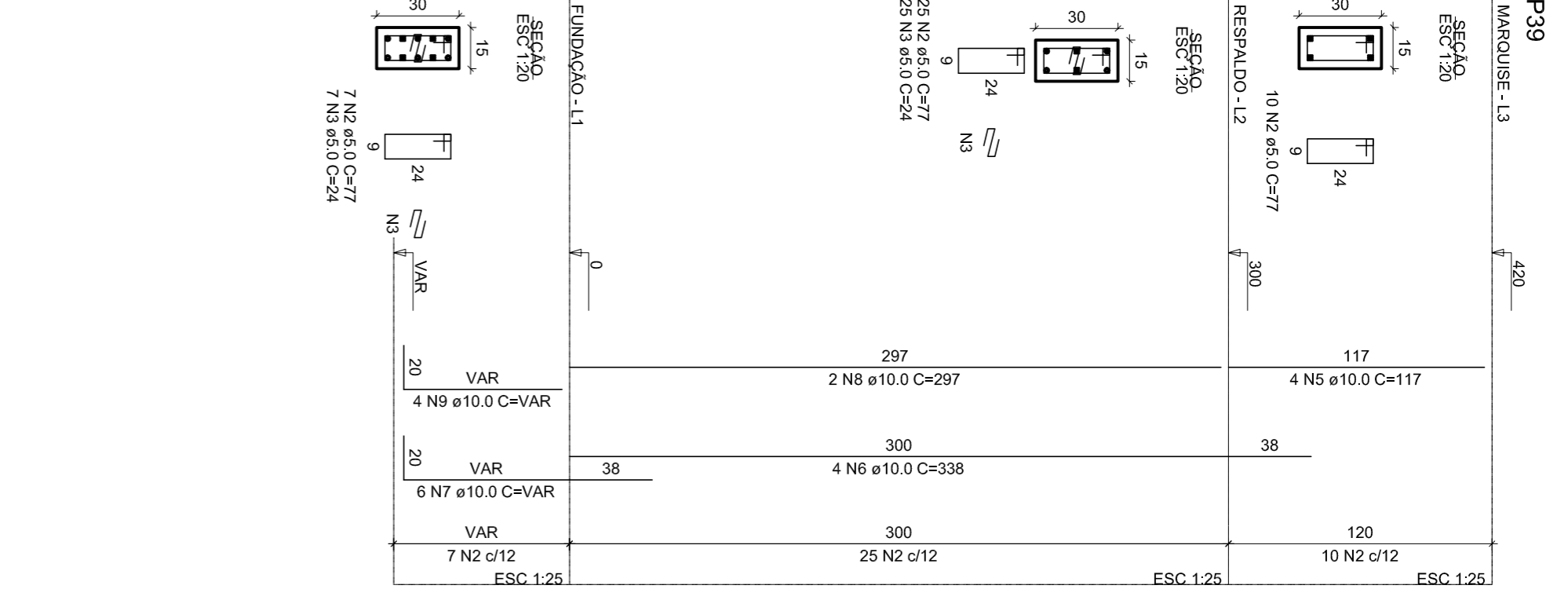
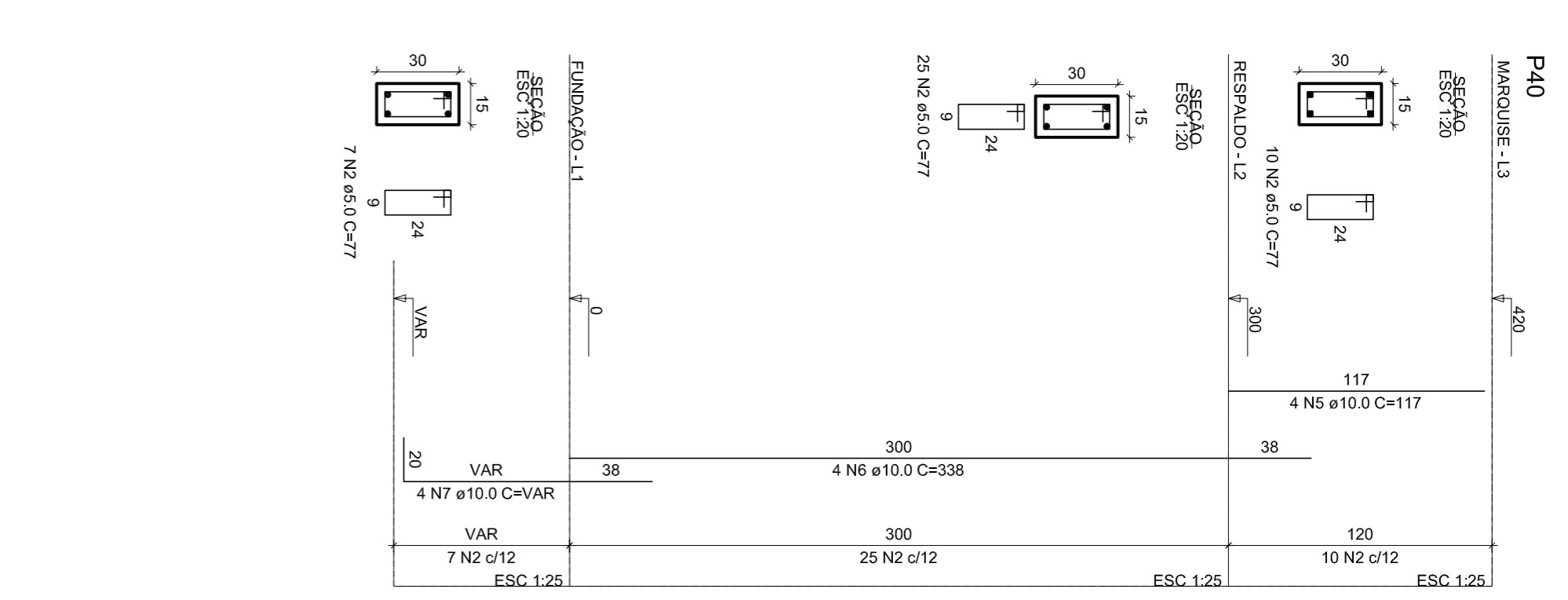
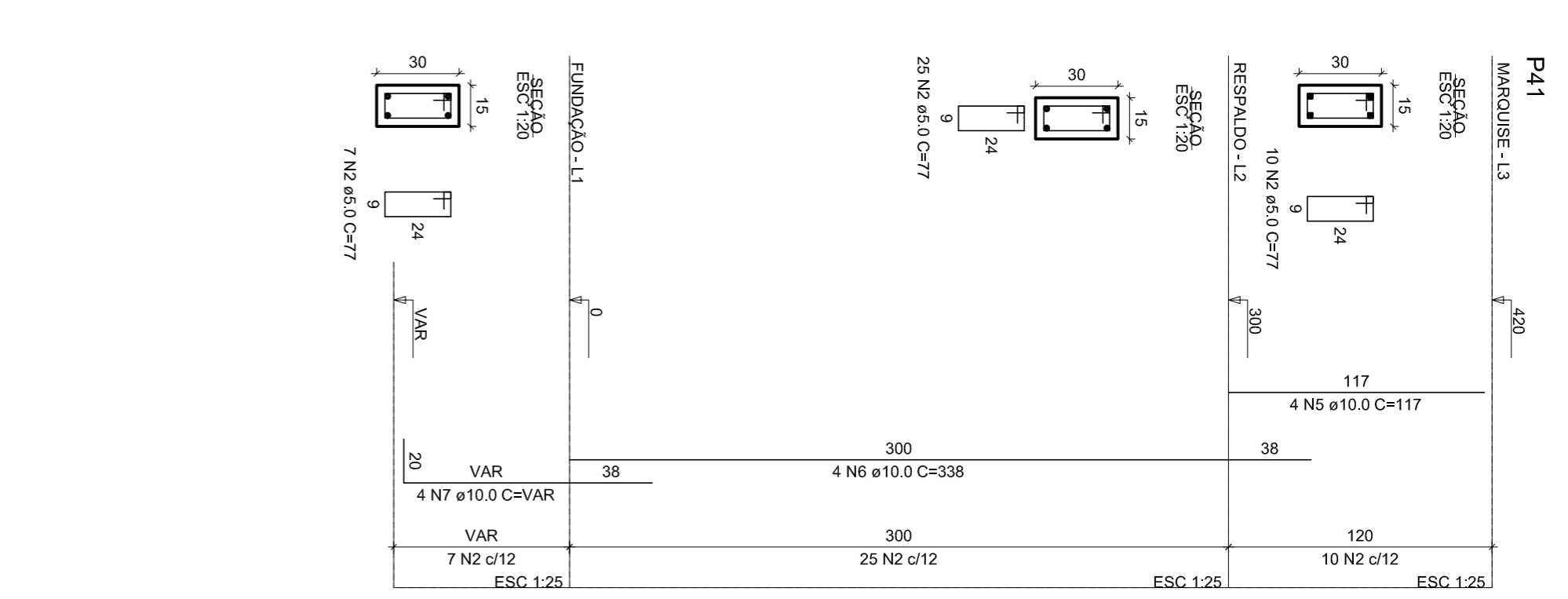
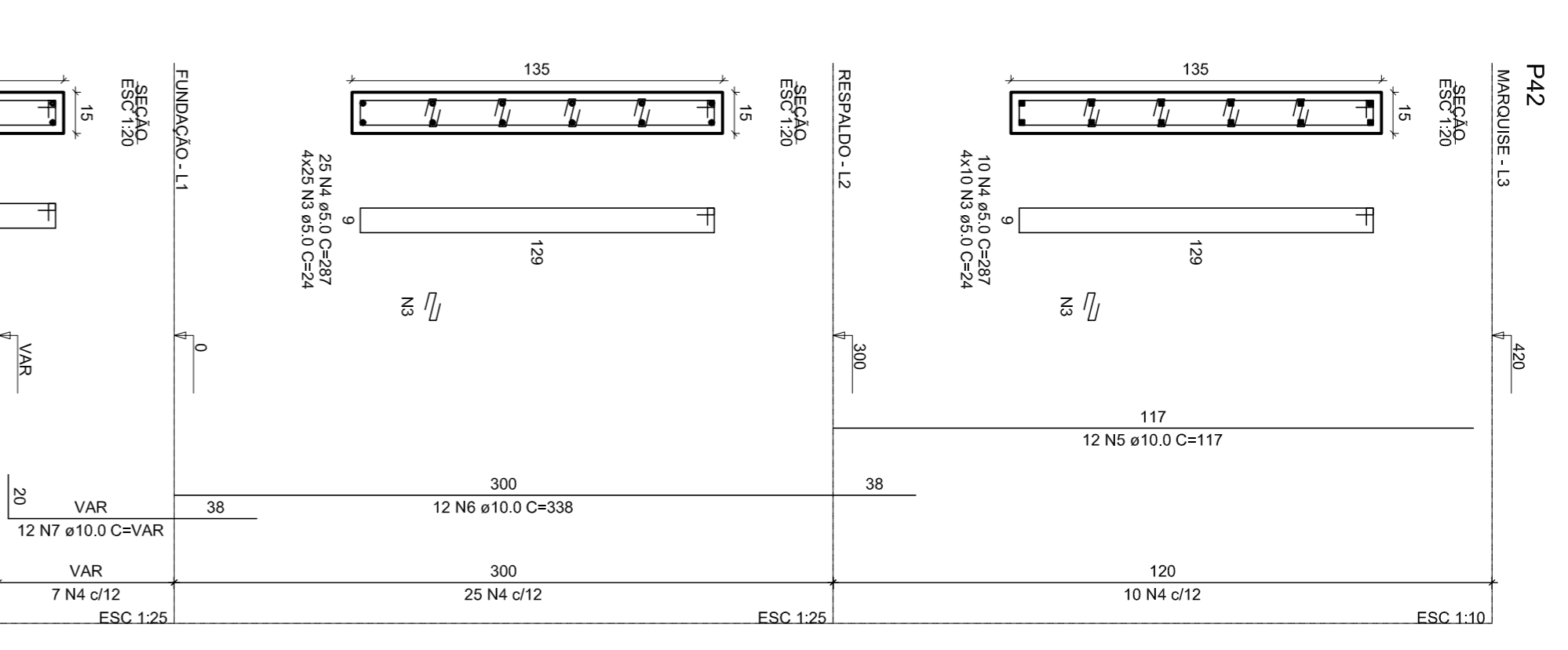
RELACIONAMENTO DO AÇO

ACO	N	DIAM (mm)	QUANT	CUMT (cm)	C.TOTAL (cm)
P5-1.3	1	5.0	210	97	14170
P5-1.2	3	5.0	24	24	4800
P5-1.1	4	10.0	42	287	12854
P5-1.3	6	10.0	52	338	17576
P5-1.3	8	10.0	54	348	18612
P5-1.3	9	10.0	54	348	18612
P5-1.3	10	10.0	4	4	40
P5-1.3	11	10.0	4	4	40
P5-1.3	12	10.0	4	4	40
P5-1.3	13	10.0	4	4	40
P5-1.3	14	10.0	4	4	40
P5-1.3	15	10.0	4	4	40
P5-1.3	16	10.0	4	4	40
P5-1.3	17	10.0	4	4	40
P5-1.3	18	10.0	4	4	40
P5-1.3	19	10.0	4	4	40
P5-1.3	20	10.0	4	4	40
P5-1.3	21	10.0	4	4	40
P5-1.3	22	10.0	4	4	40
P5-1.3	23	10.0	4	4	40
P5-1.3	24	10.0	4	4	40
P5-1.3	25	10.0	4	4	40
P5-1.3	26	10.0	4	4	40
P5-1.3	27	10.0	4	4	40
P5-1.3	28	10.0	4	4	40
P5-1.3	29	10.0	4	4	40
P5-1.3	30	10.0	4	4	40
P5-1.3	31	10.0	4	4	40
P5-1.3	32	10.0	4	4	40
P5-1.3	33	10.0	4	4	40
P5-1.3	34	10.0	4	4	40
P5-1.3	35	10.0	4	4	40
P5-1.3	36	10.0	4	4	40
P5-1.3	37	10.0	4	4	40
P5-1.3	38	10.0	4	4	40
P5-1.3	39	10.0	4	4	40
P5-1.3	40	10.0	4	4	40
P5-1.3	41	10.0	4	4	40
P5-1.3	42	10.0	4	4	40
P5-1.3	43	10.0	4	4	40
P5-1.3	44	10.0	4	4	40
P5-1.3	45	10.0	4	4	40
P5-1.3	46	10.0	4	4	40
P5-1.3	47	10.0	4	4	40
P5-1.3	48	10.0	4	4	40
P5-1.3	49	10.0	4	4	40
P5-1.3	50	10.0	4	4	40
P5-1.3	51	10.0	4	4	40
P5-1.3	52	10.0	4	4	40
P5-1.3	53	10.0	4	4	40
P5-1.3	54	10.0	4	4	40
P5-1.3	55	10.0	4	4	40
P5-1.3	56	10.0	4	4	40
P5-1.3	57	10.0	4	4	40
P5-1.3	58	10.0	4	4	40
P5-1.3	59	10.0	4	4	40
P5-1.3	60	10.0	4	4	40
P5-1.3	61	10.0	4	4	40
P5-1.3	62	10.0	4	4	40
P5-1.3	63	10.0	4	4	40
P5-1.3	64	10.0	4	4	40
P5-1.3	65	10.0	4	4	40
P5-1.3	66	10.0	4	4	40
P5-1.3	67	10.0	4	4	40
P5-1.3	68	10.0	4	4	40
P5-1.3	69	10.0	4	4	40
P5-1.3	70	10.0	4	4	40
P5-1.3	71	10.0	4	4	40
P5-1.3	72	10.0	4	4	40
P5-1.3	73	10.0	4	4	40
P5-1.3	74	10.0	4	4	40
P5-1.3	75	10.0	4	4	40
P5-1.3	76	10.0	4	4	40
P5-1.3	77	10.0	4	4	40
P5-1.3	78	10.0	4	4	40
P5-1.3	79	10.0	4	4	40
P5-1.3	80	10.0	4	4	40
P5-1.3	81	10.0	4	4	40
P5-1.3	82	10.0	4	4	40
P5-1.3	83	10.0	4	4	40
P5-1.3	84	10.0	4	4	40
P5-1.3	85	10.0	4	4	40
P5-1.3	86	10.0	4	4	40
P5-1.3	87	10.0	4	4	40
P5-1.3	88	10.0	4	4	40
P5-1.3	89	10.0	4	4	40
P5-1.3	90	10.0	4	4	40
P5-1.3	91	10.0	4	4	40
P5-1.3	92	10.0	4	4	40
P5-1.3	93	10.0	4	4	40
P5-1.3	94	10.0	4	4	40
P5-1.3	95	10.0	4	4	40
P5-1.3	96	10.0	4	4	40
P5-1.3	97	10.0	4	4	40
P5-1.3	98	10.0	4	4	40
P5-1.3	99	10.0	4	4	40
P5-1.3	100	10.0	4	4	40

RESUMO DO AÇO

ACO	DIAM (mm)	C.TOTAL (kg)
C450	5.0	171.4
C460	5.0	470.9
PESO TOTAL		722.6
C450	195.7	
C460	728	

Volume de concreto C-20 = 3.14 m³
Área da forma = 97.50 m²



CONSTRUÇÃO DA FEIRA DO PRODUTOR

TIPO DO OBJETO: PREFEITURA MUNICIPAL DE ITAÚBA - MT

PROPRIETÁRIO: AV MADRI BARBARA MAIX ESQUINA COM A RUA PRINCESSA

LOCAL: IZABEL - ITAÚBA/MT

ÁREA TOTAL DA EDIFICAÇÃO: 512,66m²

ASSINATURA: POLIANE

ESTRUTURAL - CONCRETO